



Southfields Primary School

Supporting Pupils with Medical Conditions

Statutory Policy approved by the Full Governing Body

Date agreed: 1st October 2024

Review Date: September 2025

This policy, having been presented to, and agreed upon by the whole staff and Governors, will be distributed to:

- All teaching staff
- School governors

A copy of the policy will also be available in:

- The Staffroom
- The Head's office
- School web site

This will ensure that the policy is readily available to visiting teachers, support staff and parents.

Southfields Primary is totally committed to social justice and improving life chances for potentially vulnerable children. It is dedicated to sharing its work and findings beyond the school to improve outcomes for as many children as it can reach and has a particular specialism in Speech and Language development.

1. Aims

This policy aims to ensure that:

- Pupils, staff and parents understand how our school will support pupils with medical conditions
- Pupils with medical conditions are properly supported to allow them to access the same education as other pupils, including school trips and sporting activities

The governing board will implement this policy by:

- Making sure sufficient staff are suitably trained
- Making staff aware of pupils' conditions, where appropriate
- Making sure there are cover arrangements to ensure someone is always available to support pupils with medical conditions
- Providing supply teachers with appropriate information about the policy and relevant pupils
- Developing and monitoring individual healthcare plans (IHPs)

The named person with responsibility for implementing this policy is the Headteacher.

2. Legislation and statutory responsibilities

This policy meets the requirements under [Section 100 of the Children and Families Act 2014](#), which places a duty on governing boards to make arrangements for supporting pupils at their school with medical conditions.

It is also based on the Department for Education (DfE)'s statutory guidance on [supporting pupils with medical conditions at school](#).

3. Roles and responsibilities

3.1 The governing board

The governing board has ultimate responsibility to make arrangements to support pupils with medical conditions. The governing board will ensure that sufficient staff have received suitable training and are competent before they are responsible for supporting children with medical conditions.

3.2 The Headteacher

The Headteacher will:

- Make sure all staff are aware of this policy and understand their role in its implementation
- Ensure that there is a sufficient number of trained staff available to implement this policy and deliver against all individual healthcare plans (IHPs), including in contingency and emergency situations
- Ensure that all staff who need to know are aware of a child's condition
- Take overall responsibility for the development of IHPs

- Make sure that school staff are appropriately insured and aware that they are insured to support pupils in this way
- Contact the school nursing service in the case of any pupil who has a medical condition that may require support at school, but who has not yet been brought to the attention of the school nurse
- Ensure that systems are in place for obtaining information about a child's medical needs and that this information is kept up to date

3.3 Staff

Supporting pupils with medical conditions during school hours is not the sole responsibility of one person. Any member of staff may be asked to provide support to pupils with medical conditions, although they will not be required to do so. This includes the administration of medicines.

Those staff who take on the responsibility to support pupils with medical conditions will receive sufficient and suitable training, and will achieve the necessary level of competency before doing so.

Teachers will take into account the needs of pupils with medical conditions that they teach. All staff will know what to do and respond accordingly when they become aware that a pupil with a medical condition needs help.

3.4 Parents

Parents will:

- Provide the school with sufficient and up-to-date information about their child's medical needs
- Be involved in the development and review of their child's IHP and may be involved in its drafting
- Carry out any action they have agreed to as part of the implementation of the IHP, e.g. provide medicines and equipment, and ensure they or another nominated adult are contactable at all times

3.5 Pupils

Pupils with medical conditions will often be best placed to provide information about how their condition affects them. Pupils should be fully involved in discussions about their medical support needs and contribute as much as possible to the development of their IHPs. They are also expected to comply with their IHPs.

3.6 School nurses and other healthcare professionals

Our school nursing service will notify the school when a pupil has been identified as having a medical condition that will require support in school. This will be before the pupil starts school, wherever possible. They may also support staff to implement a child's IHP.

Healthcare professionals, such as GPs and paediatricians, will liaise with the school's nurses and notify them of any pupils identified as having a medical condition. They may also provide advice on developing IHPs.

4. Equal opportunities

Our school is clear about the need to actively support pupils with medical conditions to participate in school trips and visits, or in sporting activities, and not prevent them from doing so.

The school will consider what reasonable adjustments need to be made to enable these pupils to participate fully and safely on school trips, visits and sporting activities.

Risk assessments will be carried out so that planning arrangements take account of any steps needed to ensure that pupils with medical conditions are included. In doing so, pupils, their parents and any relevant healthcare professionals will be consulted.

5. Being notified that a child has a medical condition

When the school is notified that a pupil has a medical condition, the process outlined below will be followed to decide whether the pupil requires an IHP.

The school will make every effort to ensure that arrangements are put into place within 2 weeks, or by the beginning of the relevant term for pupils who are new to our school. See Appendix 1.

6. Individual healthcare plans (IHPs)

The Headteacher has overall responsibility for the development of IHPs for pupils with medical conditions.

Plans will be reviewed at least annually, or earlier if there is evidence that the pupil's needs have changed.

Plans will be developed with the pupil's best interests in mind and will set out:

- What needs to be done
- When
- By whom

Not all pupils with a medical condition will require an IHP. It will be agreed with a healthcare professional and the parents when an IHP would be inappropriate or disproportionate. This will be based on evidence. If there is no consensus, the Headteacher will make the final decision.

Plans will be drawn up in partnership with the school, parents and a relevant healthcare professional, such as the school nurse, specialist or paediatrician, who can best advise on the pupil's specific needs. The pupil will be involved wherever appropriate.

IHPs will be linked to, or become part of, any education, health and care (EHC) plan. If a pupil has SEN but does not have an EHC plan, the SEN will be mentioned in the IHP.

The level of detail in the plan will depend on the complexity of the child's condition and how much support is needed. The governing board and the Headteacher will consider the following when deciding what information to record on IHPs:

- The medical condition, its triggers, signs, symptoms and treatments
- The pupil's resulting needs, including medication (dose, side effects and storage) and other treatments, time, facilities, equipment, testing, access to food and drink where this is used to manage their condition, dietary requirements and environmental issues, e.g. crowded corridors, travel time between lessons
- Specific support for the pupil's educational, social and emotional needs. For example, how absences will be managed, requirements for extra time to complete exams, use of rest periods or additional support in catching up with lessons, counselling sessions
- The level of support needed, including in emergencies. If a pupil is self-managing their medication, this will be clearly stated with appropriate arrangements for monitoring
- Who will provide this support, their training needs, expectations of their role and confirmation of proficiency to provide support for the pupil's medical condition from a healthcare professional, and cover arrangements for when they are unavailable
- Who in the school needs to be aware of the pupil's condition and the support required
- Arrangements for written permission from parents and the Headteacher for medication to be administered by a member of staff, or self-administered by the pupil during school hours
- Separate arrangements or procedures required for school trips or other school activities outside of the normal school timetable that will ensure the pupil can participate, e.g. risk assessments
- Where confidentiality issues are raised by the parent/pupil, the designated individuals to be entrusted with information about the pupil's condition
- What to do in an emergency, including who to contact, and contingency arrangements

7. Managing medicines

Prescription only medicines will be administered at school:

- When it would be detrimental to the pupil's health or school attendance not to do so and
- Where we have parents' written consent

Pupils under 16 will not be given medicine containing aspirin unless prescribed by a doctor.

Anyone giving a pupil any medication (for example, for pain relief) will first check maximum dosages and when the previous dosage was taken. Parents will always be informed.

The school will only accept prescribed medicines that are:

- In-date
- Labelled
- Provided in the original container, as dispensed by the pharmacist, and include instructions for administration, dosage and storage

The school will accept insulin that is inside an insulin pen or pump rather than its original container, but it must be in date.

All medicines will be stored safely. Pupils will be informed about where their medicines are at all times and be able to access them immediately. Medicines and devices such as asthma inhalers, blood glucose testing meters and adrenaline pens will always be readily available to pupils and not locked away.

Medicines will be returned to parents to arrange for safe disposal when no longer required.

7.1 Controlled drugs

Controlled drugs are prescription medicines that are controlled under the Misuse of Drugs Regulations 2001 and subsequent amendments, such as morphine or methadone.

A pupil who has been prescribed a controlled drug may have it in their possession if they are competent to do so, but they must not pass it to another pupil to use. All other controlled drugs are kept in a secure cupboard in the school office and only named staff have access.

Controlled drugs will be easily accessible in an emergency and a record of any doses used and the amount held will be kept.

7.2 Pupils managing their own needs

Pupils who are competent will be encouraged to take responsibility for managing their own medicines and procedures. This will be discussed with parents and it will be reflected in their IHPs.

Pupils will be allowed to carry their own medicines and relevant devices wherever possible. Staff will not force a pupil to take a medicine or carry out a necessary

procedure if they refuse, but will follow the procedure agreed in the IHP and inform parents so that an alternative option can be considered, if necessary.

7.3 Unacceptable practice

School staff should use their discretion and judge each case individually with reference to the pupil's IHP, but it is generally not acceptable to:

- Prevent pupils from easily accessing their inhalers and medication, and administering their medication when and where necessary
- Assume that every pupil with the same condition requires the same treatment
- Ignore the views of the pupil or their parents
- Ignore medical evidence or opinion (although this may be challenged)
- Send children with medical conditions home frequently for reasons associated with their medical condition or prevent them from staying for normal school activities, including lunch, unless this is specified in their IHPs
- If the pupil becomes ill, send them to the school office or medical room unaccompanied or with someone unsuitable
- Penalise pupils for their attendance record if their absences are related to their medical condition, e.g. hospital appointments
- Prevent pupils from drinking, eating or taking toilet or other breaks whenever they need to in order to manage their medical condition effectively
- Require parents, or otherwise make them feel obliged, to attend school to administer medication or provide medical support to their pupil, including with toileting issues. No parent should have to give up working because the school is failing to support their child's medical needs
- Prevent pupils from participating, or create unnecessary barriers to pupils participating in any aspect of school life, including school trips, e.g. by requiring parents to accompany their child
- Administer, or ask pupils to administer, medicine in school toilets

8. Emergency procedures

Staff will follow the school's normal emergency procedures (for example, calling 999). All pupils' IHPs will clearly set out what constitutes an emergency and will explain what to do.

If a pupil needs to be taken to hospital, staff will stay with the pupil until the parent arrives, or accompany the pupil to hospital by ambulance.

9. Training

Staff who are responsible for supporting pupils with medical needs will receive suitable and sufficient training to do so.

The training will be identified during the development or review of IHPs. Staff who provide support to pupils with medical conditions will be included in meetings where this is discussed.

The relevant healthcare professionals will lead on identifying the type and level of training required and will agree this with the Headteacher. Training will be kept up to date.

Training will:

- Be sufficient to ensure that staff are competent and have confidence in their ability to support the pupils
- Fulfil the requirements in the IHPs
- Help staff to have an understanding of the specific medical conditions they are being asked to deal with, their implications and preventative measures

Healthcare professionals will provide confirmation of the proficiency of staff in a medical procedure, or in providing medication.

All staff will receive training so that they are aware of this policy and understand their role in implementing it, for example, with preventative and emergency measures so they can recognise and act quickly when a problem occurs. This will be provided for new staff during their induction.

10. Record keeping

The governing board will ensure that written records are kept of all medicine administered to pupils for as long as these pupils are at the school. Parents will be informed if their pupil has been unwell at school.

IHPs are kept in a readily accessible place which all staff are aware of.

11. Liability and indemnity

The governing board will ensure that the appropriate level of insurance is in place and appropriately reflects the school's level of risk.

The school is covered by Peterborough City Council's own insurance policy provided by Zurich Municipal Insurance. The limit of indemnity is £50,000,000 each for public, employers and product liability.

12. Complaints

Parents with a complaint about the school's actions in regard to their child's medical condition should discuss these directly with the Headteacher in the first instance. If the

Headteacher cannot resolve the matter, they will direct parents to the school's complaints procedure.

13. Monitoring arrangements

This policy will be reviewed and approved by the governing board annually.

14. Links to other policies

This policy links to the following policies:

- Accessibility plan
- Complaints
- Equality information and objectives
- First aid
- Health and safety
- Safeguarding
- Special educational needs information report and policy

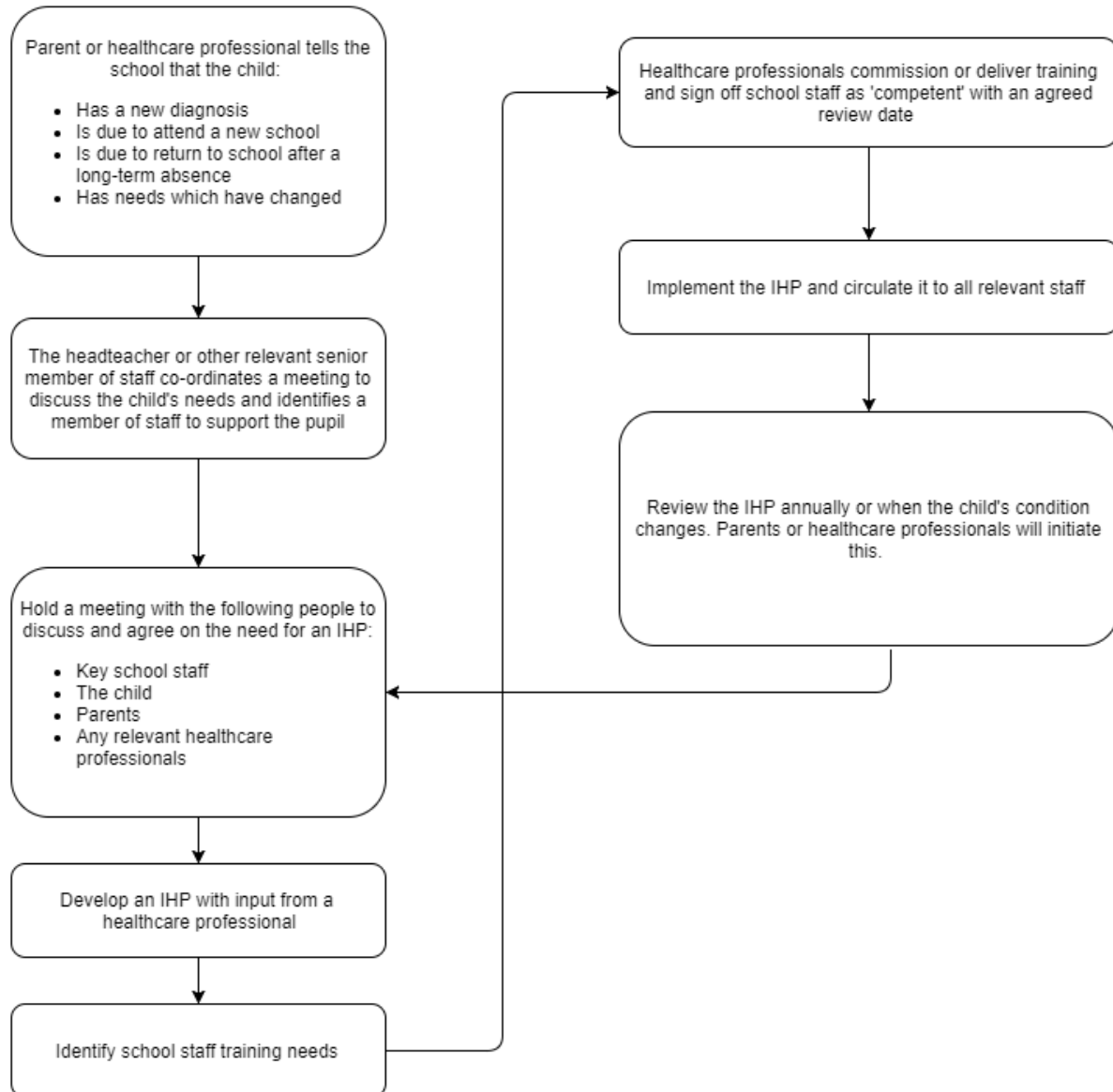
Signed on behalf of the Governing Body:



John Durance
Chair of Governors
01.10.2024

Appendix A

Being notified a child has a medical condition



Appendix B



Southfields Primary School

Medication Information and Consent Form

Name of Child:		
Date of Birth:		
Name of Parent/Carer 1:		Home tele: Mobile: Work:
Name of Parent/Carer 2:		Home tele: Mobile: Work:
Name of GP:		Telephone:
Hospital Consultant and Hospital:		Telephone and extension:
Any known Allergies:		

I consent to my child receiving the following medication/s in school:

Name of Medication	Dosage	Duration of Course

- I undertake to ensure that the school has adequate supplies of this/these medication(s).
- I undertake to ensure that this/these medication(s) supplied by me and prescribed by my child's doctor is/are correctly labelled and dated, with storage details attached and that the school will be informed of any changes.
- I understand that the medication will be given by a member of staff who has received appropriate training in accordance with the Local Education Authority Code of Practice.

Signed: _____ Parent/Carer

Date: _____

Appendix C



Southfields Primary School

Name of Pupil: _____ Class: _____

Registration of Medication Obtained

Name of Pupil	Date	Name of person who brought medication in	Name of medication	When was medication last administered?	Amount supplied – container marked and initialised	Expiry Date	Dosage	Received by	Time/Date of collection by Parent/Carer, container remarked as to amount remaining and initialised accordingly



Name of Pupil: _____ Class: _____

Registration of Medication Administered

Name of person administering medication	Date and Time Medication Taken by Pupil	Name of Medication	Dosage given (measurement and quantity)	Checklist	
				Adult 1	Adult 2
1.			Dosage: _____ <input type="checkbox"/> Swallowed with water <input type="checkbox"/> Dissolved <input type="checkbox"/> Spoon <input type="checkbox"/> Other (please explain) _____	<input type="checkbox"/> Name of Pupil <input type="checkbox"/> Expiry Date <input type="checkbox"/> Dosage <input type="checkbox"/> Time <input type="checkbox"/> Last dose Initial: _____	<input type="checkbox"/> Name of Pupil <input type="checkbox"/> Expiry Date <input type="checkbox"/> Dosage <input type="checkbox"/> Time <input type="checkbox"/> Last dose Initial: _____
2.					
1.			Dosage: _____ <input type="checkbox"/> Swallowed with water <input type="checkbox"/> Dissolved <input type="checkbox"/> Spoon <input type="checkbox"/> Other (please explain) _____	<input type="checkbox"/> Name of Pupil <input type="checkbox"/> Expiry Date <input type="checkbox"/> Dosage <input type="checkbox"/> Time <input type="checkbox"/> Last dose Initial: _____	<input type="checkbox"/> Name of Pupil <input type="checkbox"/> Expiry Date <input type="checkbox"/> Dosage <input type="checkbox"/> Time <input type="checkbox"/> Last dose Initial: _____
2.					



Southfields Primary School

Long Term Medication Administered Form

Name of Pupil: _____ Class: _____

Name of Medication:		Expiry Date:	
Dosage:		How Given:	

Registration of Medication Administered

Name of person administering medication	Date and Time Medication Taken by Pupil	Name of Medication	Dosage given (measurement and quantity)
1.			
2.			
1.			
2.			
1.			
2.			
1.			
2.			

Appendix D

DELEGATION OF NURSING PROCEDURES TO PERSONS EMPLOYED BY PETERBOROUGH LOCAL EDUCATION AUTHORITY AT:

..... (School)

Name of Child Date of Birth

Part One: Headteacher

I (*name*) have agreed the following procedures to be carried out by the persons identified below who are employed at (*name of school*). The parents have signed the consent form.

Signed (Headteacher) Date

Procedure/s

- | | |
|---------|---------|
| 1. | 4. |
| 2. | 5. |
| 3. | 6. |

Part Two: Delegation and Acceptance of Procedures

Delegation of Procedures				Acceptance of Procedures		
Name of Delegator	Signature of Delegator	Date of Delegation and Procedures delegated (as number above) Number Date		Name of Staff Member	Signature of Staff Member	Date

Period for which processes are delegated:

From (*date*) To (*date*)

Part Three: Officer Nominated by the Health Trust

For the officer nominated by the Health Trust responsible for the provision of the above nursing tasks.

My delegation signature in Part Two above confirms that I am satisfied that the above named staff members are competent to carry out the above named procedures for the period specified. I agree to monitor and evaluate this delegation as recommended by the designated consultant paediatrician.

Signed Date

Part Four: School Staff

For staff employed at (*name of school*)

My acceptance signature above confirms that I agree to undertake the above procedures for the above named child and that I have undertaken the required training relating to the above procedures which was provided by the nominated officer of the responsible Health Trust.

Signed Date

GUIDANCE NOTES FOR DELEGATION OF NURSING PROCEDURES

1. Entries must be made in block capitals.
2. If there is insufficient space to enter all the names of the delegates, then a supplementary sheet should be added.
3. Forms should not be destroyed for a period of 3 years from the date of the latest entry.
4. If the delegator leaves, a new delegation is required.
5. Entries, once made, should not be interfered with or tippexed in any way.
6. It is essential that the parent/carer has completed the consent form before the delegation is made.

Appendix E

Public Health England Guidance on infection control in schools

Rashes and skin infections	Recommended period to be kept away from school, nursery or childminders	Comments
Athlete's foot	None	Athlete's foot is not a serious condition. Treatment is recommended
Chickenpox*	Until all vesicles have crusted over	See: Vulnerable children and female staff – pregnancy
Cold sores, (Herpes simplex)	None	Avoid kissing and contact with the sores. Cold sores are generally mild and self-limiting
German measles (rubella)*	Four days from onset of rash (as per "Green Book")	Preventable by immunisation (MMR x 2 doses). See: Female staff – pregnancy
Hand, foot and mouth	None	Contact the Duty Room if a large number of children are affected. Exclusion may be considered in some circumstances
Impetigo	Until lesions are crusted and healed, or 48 hours after commencing antibiotic treatment	Antibiotic treatment speeds healing and reduces the infectious period
Measles*	Four days from onset of rash	Preventable by vaccination (MMR x 2). See: Vulnerable children and female staff – pregnancy
Molluscum contagiosum	None	A self-limiting condition
Ringworm	Exclusion not usually required	Treatment is required
Roseola (infantum)	None	None
Scabies	Child can return after first treatment	Household and close contacts require treatment
Scarlet fever*	Child can return 24 hours after commencing appropriate antibiotic treatment	Antibiotic treatment recommended for the affected child. If more than one child has scarlet fever contact PHA Duty Room for further advice
Slapped cheek (fifth disease or parvovirus B19)	None once rash has developed	See: Vulnerable children and female staff – pregnancy
Shingles	Exclude only if rash is weeping and cannot be covered	Can cause chickenpox in those who are not immune i.e. have not had chickenpox. It is spread by very close contact and touch. If further information is required, contact the Duty Room. SEE: Vulnerable Children and Female Staff – Pregnancy
Warts and verrucae	None	Verrucae should be covered in swimming pools, gymnasiums and changing rooms

Diarrhoea and vomiting illness	Recommended period to be kept away from school, nursery or childminders	Comments
Diarrhoea and/or vomiting	48 hours from last episode of diarrhoea or vomiting	
<i>E. coli</i> O157 VTEC*	Should be excluded for 48 hours from the last episode of diarrhoea	Further exclusion is required for young children under five and those who have difficulty in adhering to hygiene practices
Typhoid* [and paratyphoid*] (enteric fever)	Further exclusion may be required for some children until they are no longer excreting	Children in these categories should be excluded until there is evidence of microbiological clearance. This guidance may also apply to some contacts of cases who may require microbiological clearance
Shigella* (dysentery)		Please consult the Duty Room for further advice
Cryptosporidiosis*	Exclude for 48 hours from the last episode of diarrhoea	Exclusion from swimming is advisable for two weeks after the diarrhoea has settled

Respiratory infections	Recommended period to be kept away from school, nursery or childminders	Comments
Flu (influenza)	Until recovered	See: Vulnerable children
Tuberculosis*	Always consult the Duty Room	Requires prolonged close contact for spread
Whooping cough* (pertussis)	48 hours from commencing antibiotic treatment, or 21 days from onset of illness if no antibiotic treatment	Preventable by vaccination. After treatment, non-infectious coughing may continue for many weeks. The Duty Room will organise any contact tracing necessary

Other infections	Recommended period to be kept away from school, nursery or childminders	Comments
Conjunctivitis	None	If an outbreak/cluster occurs, consult the Duty Room
Diphtheria *	Exclusion is essential. Always consult with the Duty Room	Family contacts must be excluded until cleared to return by the Duty Room. Preventable by vaccination. The Duty Room will organise any contact tracing necessary
Glandular fever	None	
Head lice	None	Treatment is recommended only in cases where live lice have been seen
Hepatitis A*	Exclude until seven days after onset of jaundice (or seven days after symptom onset if no jaundice)	The duty room will advise on any vaccination or other control measure that are needed for close contacts of a single case of hepatitis A and for suspected outbreaks.
Hepatitis B*, C, HIV/AIDS	None	Hepatitis B and C and HIV are bloodborne viruses that are not infectious through casual contact. For cleaning of body fluid spills. SEE: Good Hygiene Practice
Meningococcal meningitis*/ septicaemia*	Until recovered	Some forms of meningococcal disease are preventable by vaccination (see immunisation schedule). There is no reason to exclude siblings or other close contacts of a case. In case of an outbreak, it may be necessary to provide antibiotics with or without meningococcal vaccination to close contacts. The Duty Room will advise on any action needed.
Meningitis* due to other bacteria	Until recovered	Hib and pneumococcal meningitis are preventable by vaccination. There is no reason to exclude siblings or other close contacts of a case. The Duty Room will give advice on any action needed
Meningitis viral*	None	Milder illness. There is no reason to exclude siblings and other close contacts of a case. Contact tracing is not required
MRSA	None	Good hygiene, in particular handwashing and environmental cleaning, are important to minimise any danger of spread. If further information is required, contact the Duty Room
Mumps*	Exclude child for five days after onset of swelling	Preventable by vaccination (MMR x 2 doses)
Threadworms	None	Treatment is recommended for the child and household contacts
Tonsillitis	None	There are many causes, but most cases are due to viruses and do not need an antibiotic

* denotes a notifiable disease. It is a statutory requirement that doctors report a notifiable disease to the Director of Public Health via the Duty Room.

Outbreaks: if a school, nursery or childminder suspects an outbreak of infectious disease, they should inform the Duty Room.